

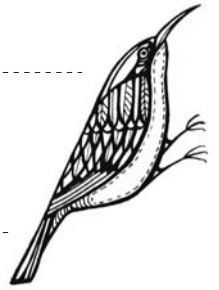
# Gabrielle Reith

---

## gra-artworks

The Stables, Barnyards, Easter Skene, Aberdeenshire, AB32 6YB

---



I graduated from Gray's School of art in 1998 and set up my own business shortly after to help promote and showcase my work. My artistic practice includes fine art (painting and drawing), woodcarving, illustration, textiles, printmaking and tutoring.

I have worked on numerous private commissions ranging from large paintings to single wood carvings and illustrations (for the Toulmin prize - Word festival 2008). The Scotsman newspaper has named me as one of the top 20 artists in Scotland.

I come from a family deeply rooted in the traditional music scene of the North East of Scotland, my granddad and great granddad having played with James Scott Skinner.

I feel that a trophy made using the traditional skills of wood carving would be particularly appropriate for this award. My woodcarvings have a narrative which reflect the nature of traditional songs whilst the use of wood provides a link with the tradition of fiddle making.

Gabrielle Reith

# Gabrielle Reith

---

## Education

1994 - 1998

BA Hons Fine Art (Drawing & Painting), Gray's School of Art, RGU

---

## Work

2007 - Present

Illustrator for Morning Glass

2003 - Present

Art Tutor, Whitespace, Aberdeen

1995 - 2001

Visual merchandising - Deputy  
Manager, Debenhams Plc

2007 - Present

NEOS Co-ordinator

2001 - 2003

Craft Workshop Co-ordinator, Turning Point Scotland, Aberdeen

---

## Galleries

Aberdeen Art Gallery, Baillie Gallery, Beaully Gallery, Carby Art, Cross Art, GHAT, Green Gallery, Heinzel Gallery, Just art, Larks, Leith Gallery, Mall Galleries, Milton of Crathes Oriel Art, Peacock Visual Arts, Scotlandart.com, Strathearn, Tolquhon, Tollbooth, Wills Art Warehouse (London)

---

## Skills

### Art

Drawing, Oil Acrylic & Watercolour Painting, Photography, Textiles (weaving, felting & sewing), Basic Ceramics, Glass (fusing, mosaic, slumping), Papier-Mâché, Paper making, Woodcarving, Woodturning, Pyrography, Enameling, Screen printing, Woodcut Printmaking

### Other

Disclosure Scotland checked (Whitespace & Aberdeen Arts Centre), Committee member of the Friends of Aberdeen Art Gallery, Mental Health Training, Child Protection Training, Assertiveness Training, First Aid, Full Clean UK Driving License

---

## Accomplishments (abbreviated)

### 2008

Commissioned by the Elphinstone Institute to illustrate the winning entry of the "David Toulmin Award for creative writing"

(Beth's birthday sheen - by Bill Robertson) - Also published in the Leopard magazine (June 2008)

Commissioned by Aberdeen City Council to illustrate a children's book of short stories

Production of Morning-Glass window design for Auchterless Church

Production of Morning-Glass window design for Westhill Academy

Commissioned by the Gordon Highlanders to produce "kids Bydand" logo

### 2007

Wallace Space, Covent Garden, London

Tolquhon Gallery, Aberdeenshire

ScotlandArt.com, Edinburgh/Glasgow

North East Open Studios

St Columbus Hospice Annual Charity Show, Freemasons' Hall Edinburgh

Aberdeen Artists annual exhibition, Aberdeen Art Gallery

Scottish Society of Artists annual exhibition, RSA Edinburgh

Creative Cultures Scotland GAVAA (Gray's Aberdeen Visual Artists Award)

Commercial rental of 14 oil paintings, Geo-House Aberdeen

Inchgarth special needs class, Aberdeen

Gordon Highlanders children's art classes, Aberdeen

The Big Draw nationwide event, Aberdeen

Middlefield Primary School dinner hall mural project, Aberdeen

Joined Open Ground, an artists collective based in the North East of Scotland.

---

### 2006

Two Private Commissions (wood carving & painting),  
Aberdeenshire

MUSA arts cafe Christmas Show, Aberdeen

North East Open Studios

Strathearn Gallery Summer exhibition, Creiff

Aberdeen Artists annual exhibition, Aberdeen Art Gallery

Mall Galleries, London, Royal Water Colour Society Exhibition

Mall Galleries, London, Royal Pastel Society Exhibition

Children's Christmas Crafts at Oriel Art, Aberdeenshire

Sculpture trail at Oriel Art, Aberdeenshire

Hazelwood/Beechwood Schools special needs classes, Aberdeen

Bramble Brae School playground mural project, Aberdeen

Northfield Academy Fit for School project, Aberdeen

### 2005

Wills Art Warehouse, London, Christmas show.

Green Gallery, Aberfoyle, Loch Lommond.

The Contemporary Art Fair Edinburgh with Carby Art Gallery.

Corporate Christmas Commission, Wallacespace, London.

Private commission, London.

North East Open Studios

The Carby Art Gallery, Aberdeen, solo show.

Aberdeen Artists annual exhibition, Aberdeen Art Gallery

The Chelsea Art Fair, London with the Baillie Gallery (London)

The Affordable art Fair, London with the Baillie Gallery (London)

Tartan2CV, Scottish greetings card company,

(three paintings as cards)

Kittybrewster School mural project, Aberdeen

Handbag making class at Whitespace, Aberdeen

St. Machar Academy fashion show project, Aberdeen

Northfield Academy fit for school project, Aberdeen

Byron Square & Moir Green [Northfield] shop shutters projects

### 1998 - 2004

Aberdeen College purchase of 15 paintings for permanent collection  
The Scotsman newspaper, hailed as one of Scotland's top 20 artists  
(Tuesday 26th October 2004)

The Royal Botanic Gardens Applecross housing launch, Edinburgh

The Bonham Hotel solo show, Edinburgh

Commission of 15 large oil paintings for the Bonham Hotel, Edinburgh

Duff House Amnesty International show, Banff

Grampian Hospitals Art Trust, Aberdeen

The Affordable Art fair with the Strathearn Gallery, London

The Sunday Times "Ecosse" supplement on the Bonham Hotel.

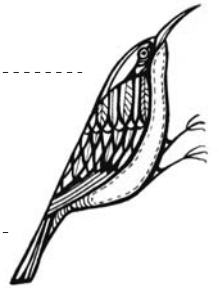
London Art on Paper Exhibition, London

Royal Scottish Academy, Edinburgh

Middlefield allotment mural project, Aberdeen

Powis shop shutter project, Aberdeen

The Big Draw workshop (with Quentin Blake)



# Gabrielle Reith

Examples of Work ©2008 Gabrielle Reith



Wood carving



Private Commission "Two Shores" (River Don)



"The Return" (Oil on canvas)



animals - Pen & ink



"A Quick Chat" (Oil on canvas)



"drawing a day 2008" pen & ink



# Gabrielle Reith

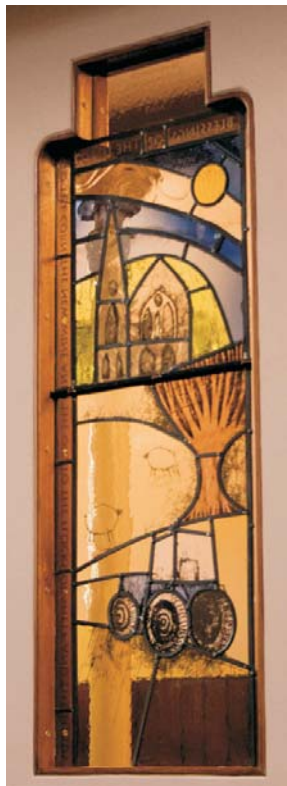
Examples of Work ©2008 Gabrielle Reith



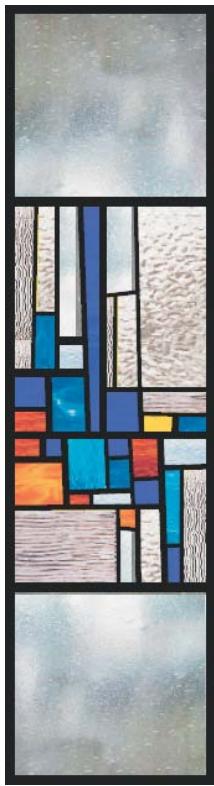
“Beth’s birthday sheen” Pen & ink + digital illustration



“Oor wey ‘o spiken” Paper cut out + digital illustration



Auchterless Church -  
Collaboration with  
Gordon Watt  
(Morning Glass Ltd.)



Private Commission -  
Collaboration with  
Gordon Watt  
(Morning Glass Ltd.)



Westhill Community Centre - Collaboration with Gordon Watt (Morning Glass Ltd.)